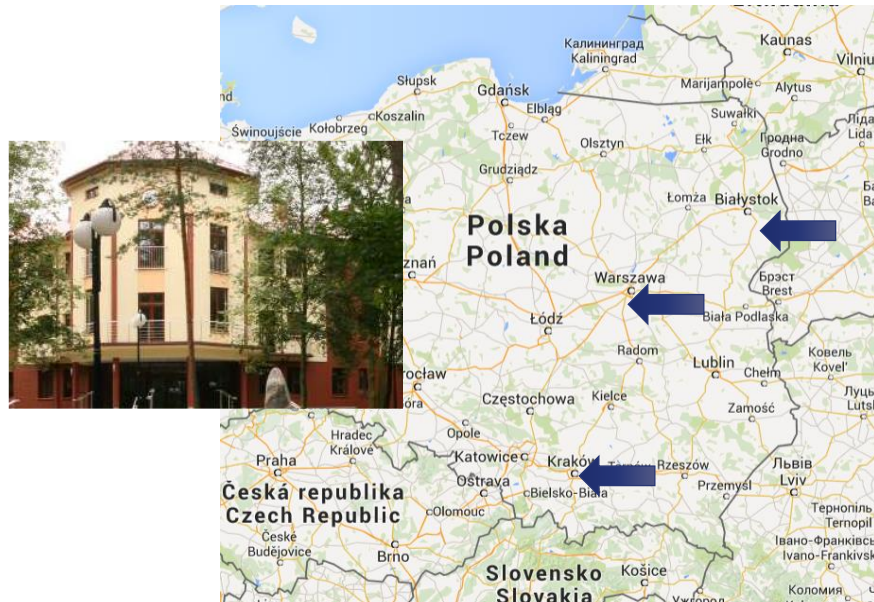




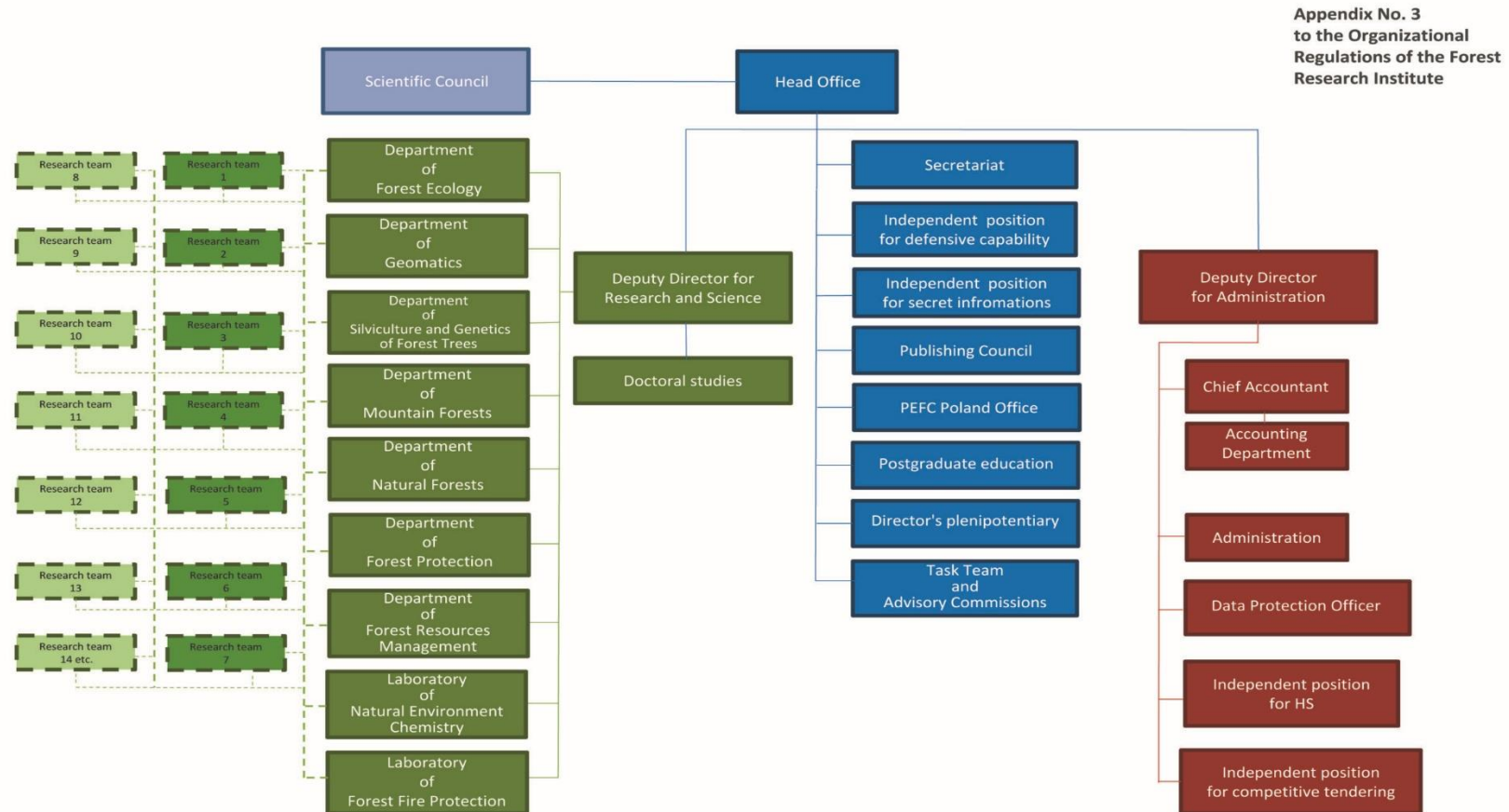
Welcome to the FOREST RESEARCH INSTITUTE in Poland



- ❖ Next year, in 2025 we will celebrate our 95th anniversary
- ❖ The Forest Research Institute was established in 1930 as an Experimental Station of the State Forests (National Forest Holding). Since 1945 it has been acting as the Forest Research Institute, at the present time subordinated to the Minister of Climate and Environment.



As of march 2024 - **164** employees, including 118 employees from scientific departments of which 69 are scientific and research and technical employees- employees from administrative cells - 46 people



In 2022, we received an **A category**, this is the highest scientific evaluation of the unit, and we are among the best scientific units in forestry in Poland.

The Institute carries out scientific research and developmental work to the benefit of all forests, forest management and other fields of forestry in the domain of:

- ❖ biology and ecology of forest communities, properties of forest environments and sites,
- ❖ conservation and development of forest resources and their multi-sided functions,
- ❖ abiotic, biotic, and man-caused factors of forest health condition, their monitoring and improving the forest health condition,
- ❖ balanced use of multi-functional forest,
- ❖ improving methods of forest research,
- ❖ performing research and service for the Ministry of Environment, the 'State Forests' Holding and other contractors, as well as forecasts, expertise and other works concerning forestry at the national and international levels.

Forest Research Institute in 21st century

1. More than 580 Completed projects and research services
2. More than 540 Expertise
3. More than 2100 Scientific articles

We are a member of **EFI - European Forest Institute** and **IUFRO - International Union of Forest Research Organizations**



1. We actively apply for funds as leaders as well as partners in international projects
2. Since 2014, we have been implementing the Scholarship Fund program of our Institute, under which we finance the arrival of scientists from abroad, as well as the scholarships of our research staff to foreign research centers.



PEFC in Poland - facts and figures: Certified forest area: 7.2 million ha (17 regional directorates of State Forests, 3 individual certificates)

PEFC chain of custody certification (22.03.24):

Individual - 509

Multi-site – 83

Producer groups – 9

Total - 601



PEFC

PEFC/32-01-01

Promoting
Sustainable Forest
Management

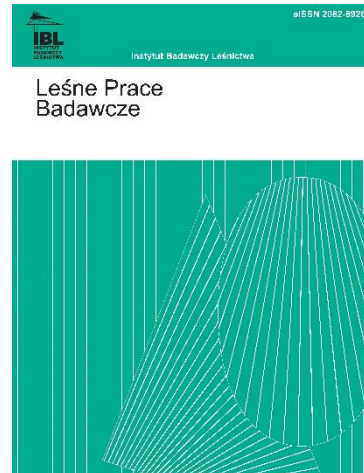
www.pefc.pl



“Folia Forestalia Polonica, Series A – Forestry”, published jointly with the Forest Sciences Committee of the Polish Academy of Sciences, in which original scientific works in English are published,

„Leśne Prace Badawcze” [Forest Research Papers], which contain scientific papers based on own research material, materials from conferences and symposia, as well as popular science works informing about achievements useful for use in forest practice.

Most of the copies of those publications are available free of charge through IBL’s website <http://www.ibles.pl>



- ❖ Our Institute, together with the State Forests, co-organizes the Winter Forestry School, a three-day conference that is not only an excellent place to exchange experiences, but also to discuss the development of forestry in Poland



Sękocin Stary, 12-14 marca 2024 r.



- ❖ We participate in the organization of the Science Festival, a periodic event aimed at promoting science in Poland
- ❖ we organize picnics and other events





Dofinansowano ze środków
Narodowego Funduszu
Ochrony Środowiska
i Gospodarki Wodnej

Private forests - opportunities, problems, solutions

2019 – 2020

Goal: To raise awareness of private forest owners, supervisors of non-state forests, and those creating legal and financial solutions in this area, regarding the needs and directions of organizational, legal and financial changes related to forest management on private lands



Ministerstwo Nauki
i Szkolnictwa Wyższego

Mobilization of social capital private forest owners (farmers) 2024 – 2025

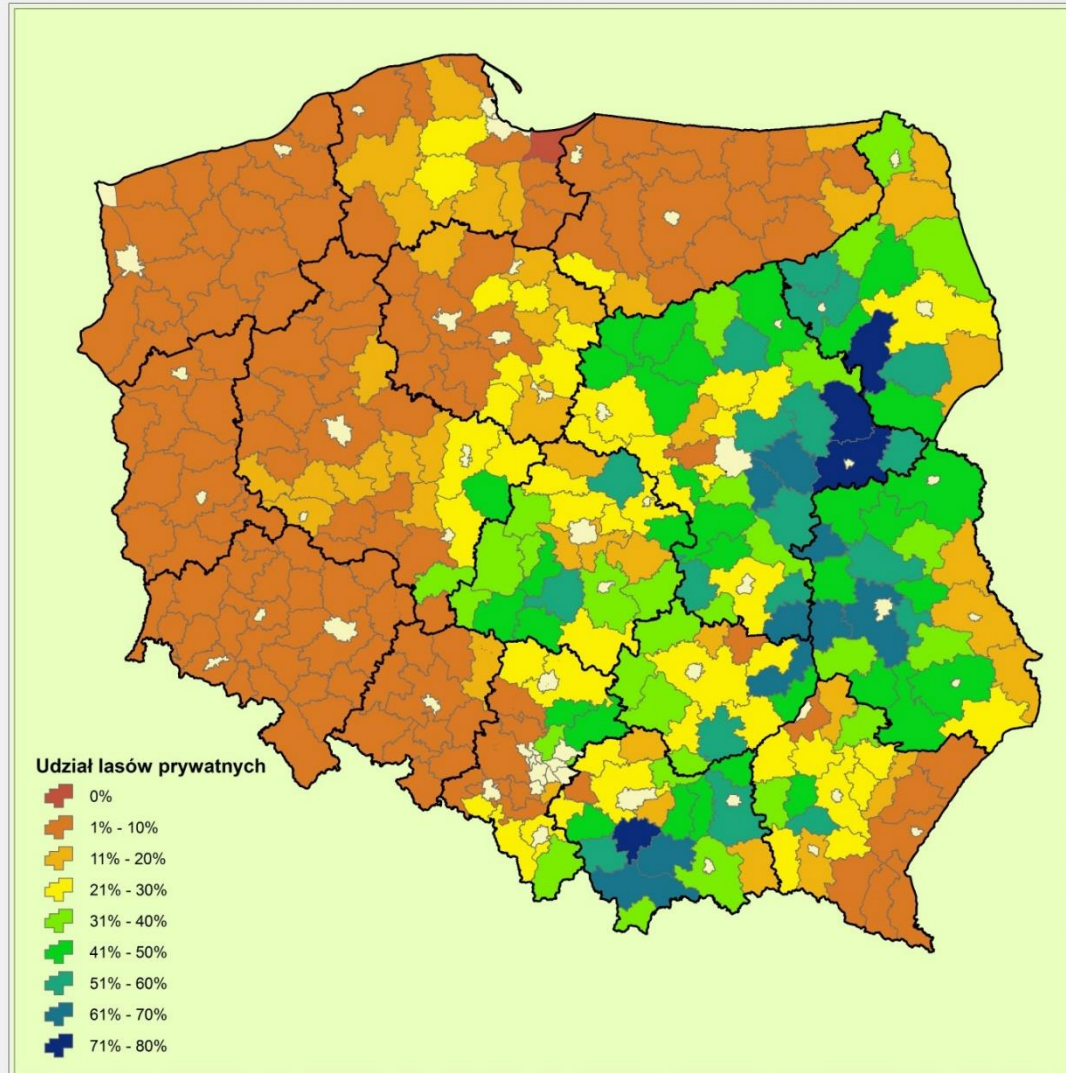
Objectives:

- to identify barriers to forming associations of private forest owners;
- to develop a system of model activities supporting the process of establishing organized forms of management in private forests;



Private forests in Poland and their owners



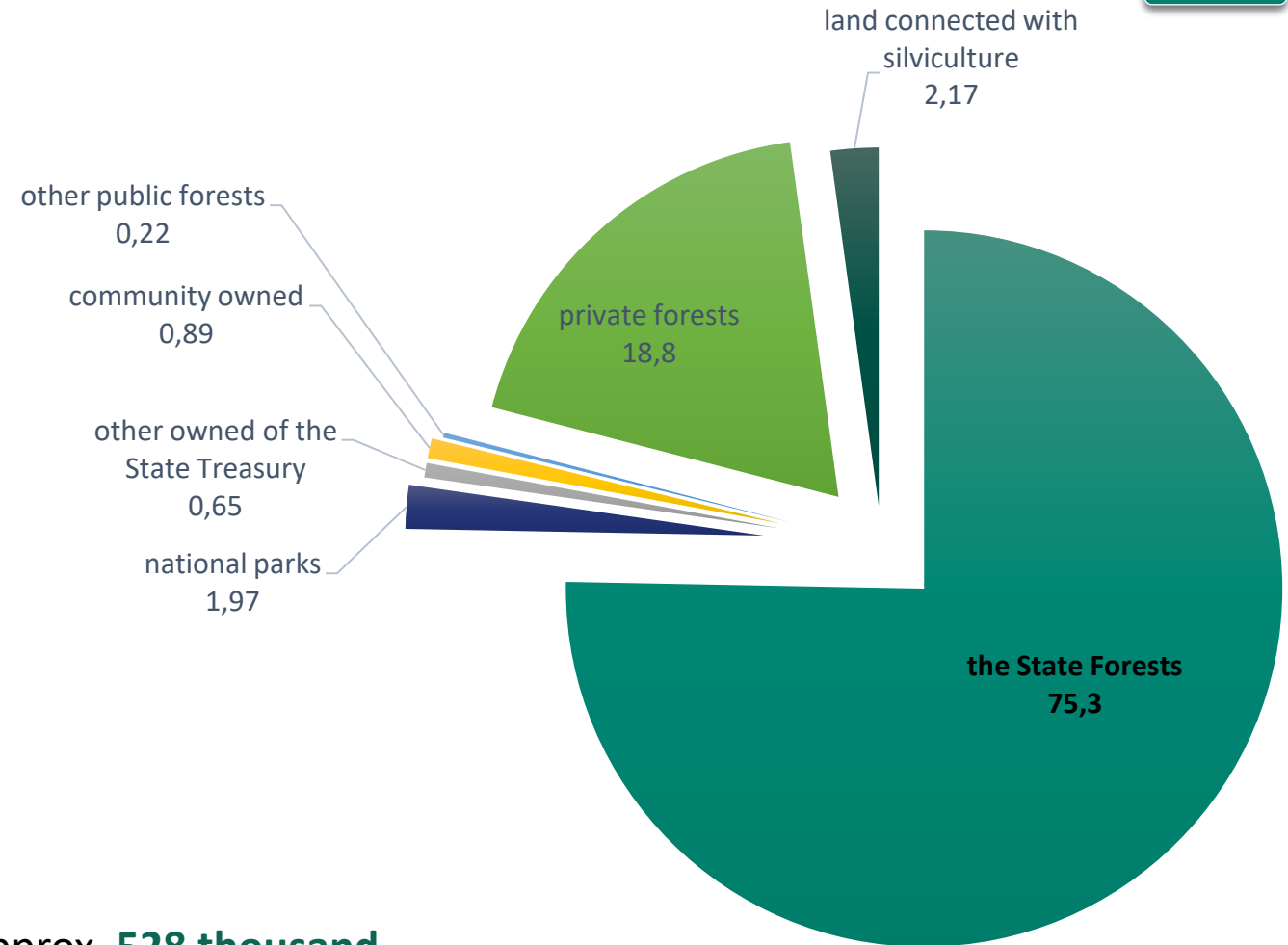
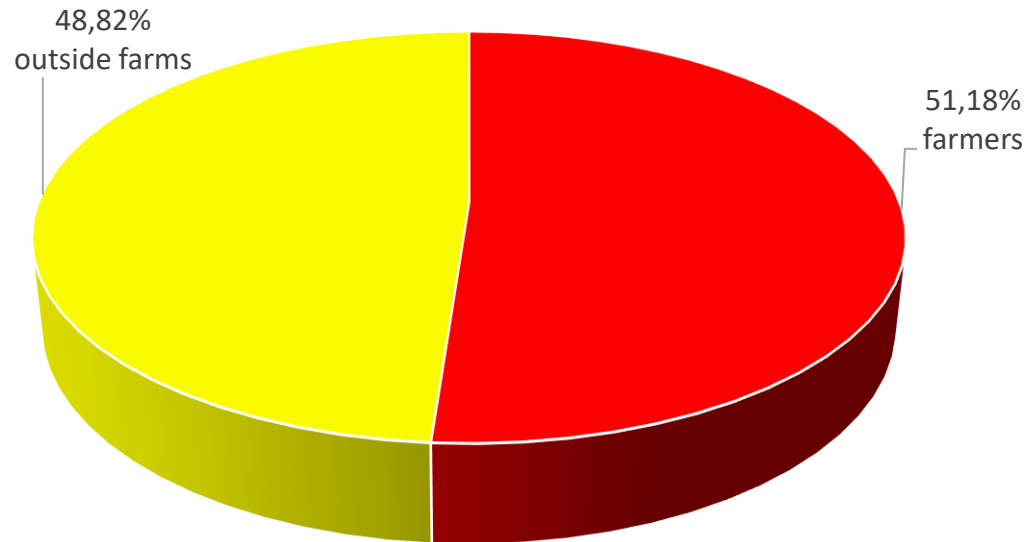


Total area of forest land – ca. 9 mln ha

Forest cover in % - 29,5

Private forests (thous. ha)	1774
<hr/>	
natural persons	1669
land co-operatives	65
cooperatives ownership	5

Area of private forests on and off farms
(PSR, Central Statistical Office 2023)

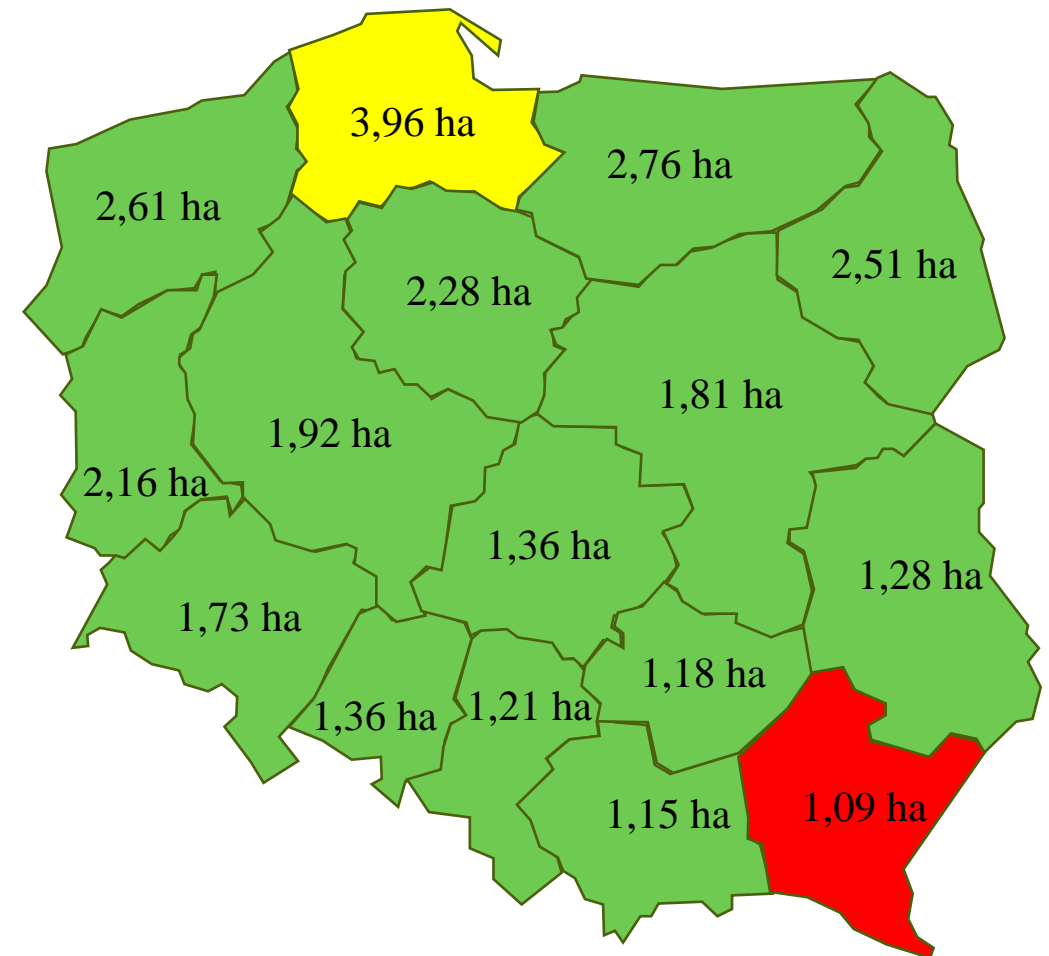


Number of farms with forest – 553 thousand

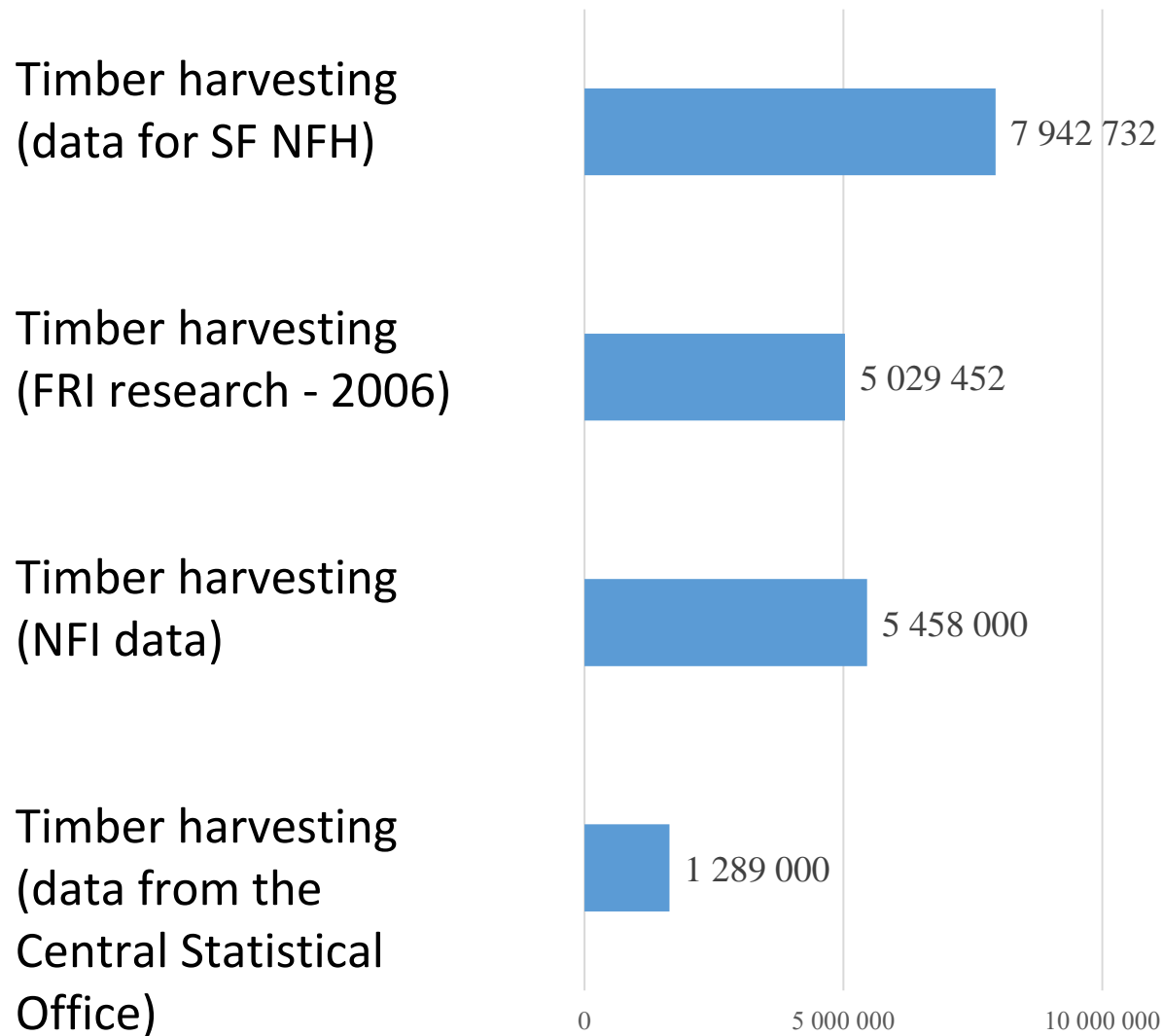
Average area – 1.65 ha/farm

Estimated number of owners who do not run farms - approx. 528 thousand

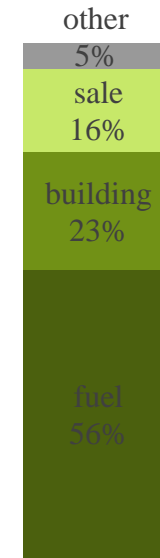
Average area of private forests in individual farms in voivodeships (PSR 2020)



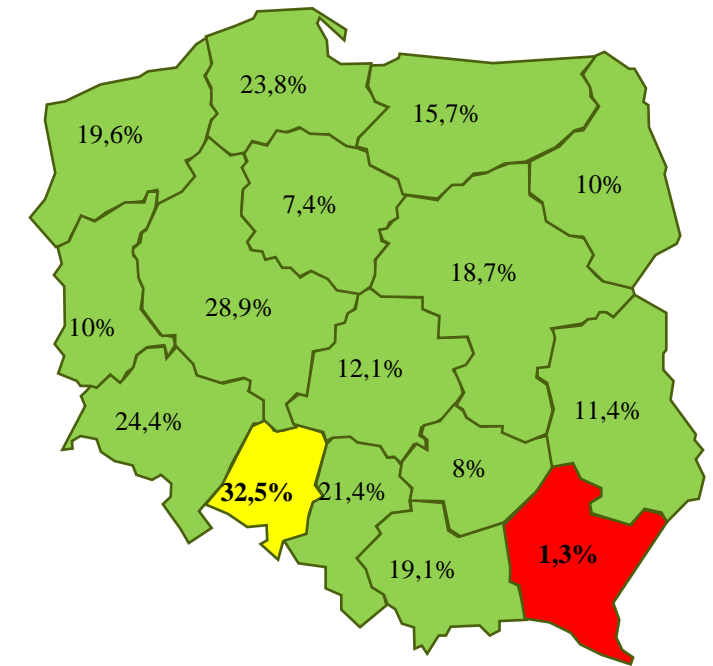
Timber harvesting in private forests [m³]



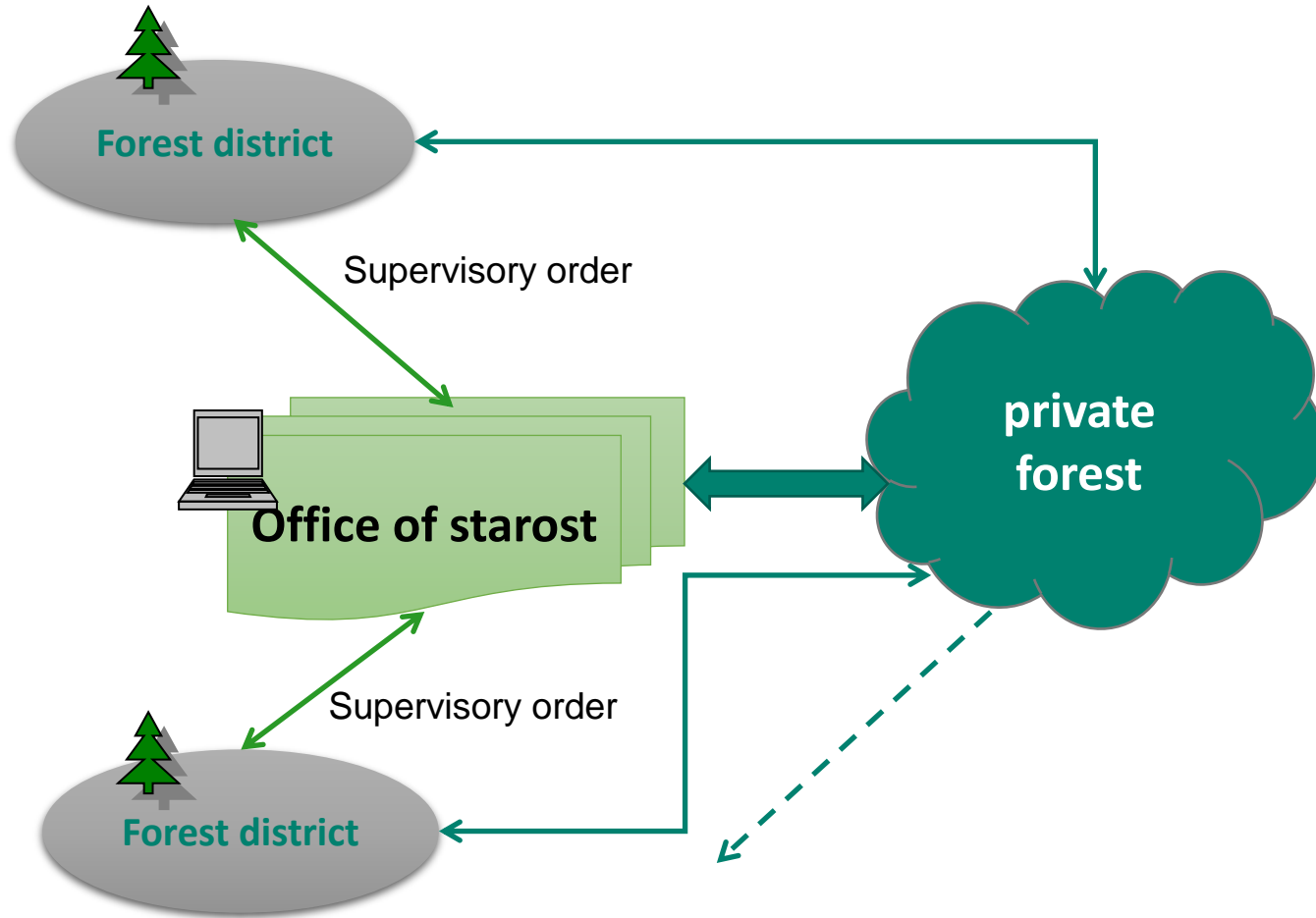
Use of wood by forest owners



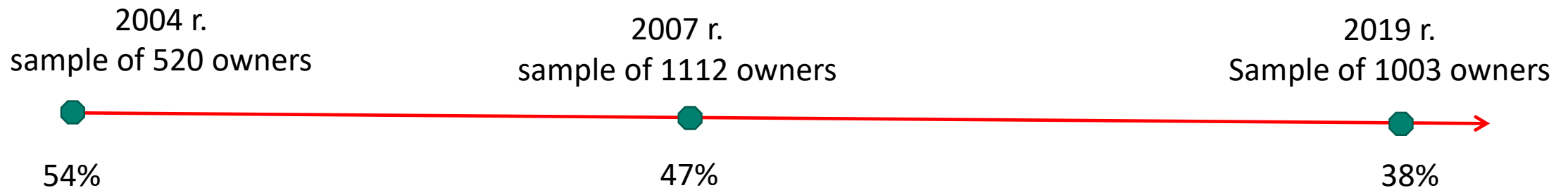
Percentage of wood for sale

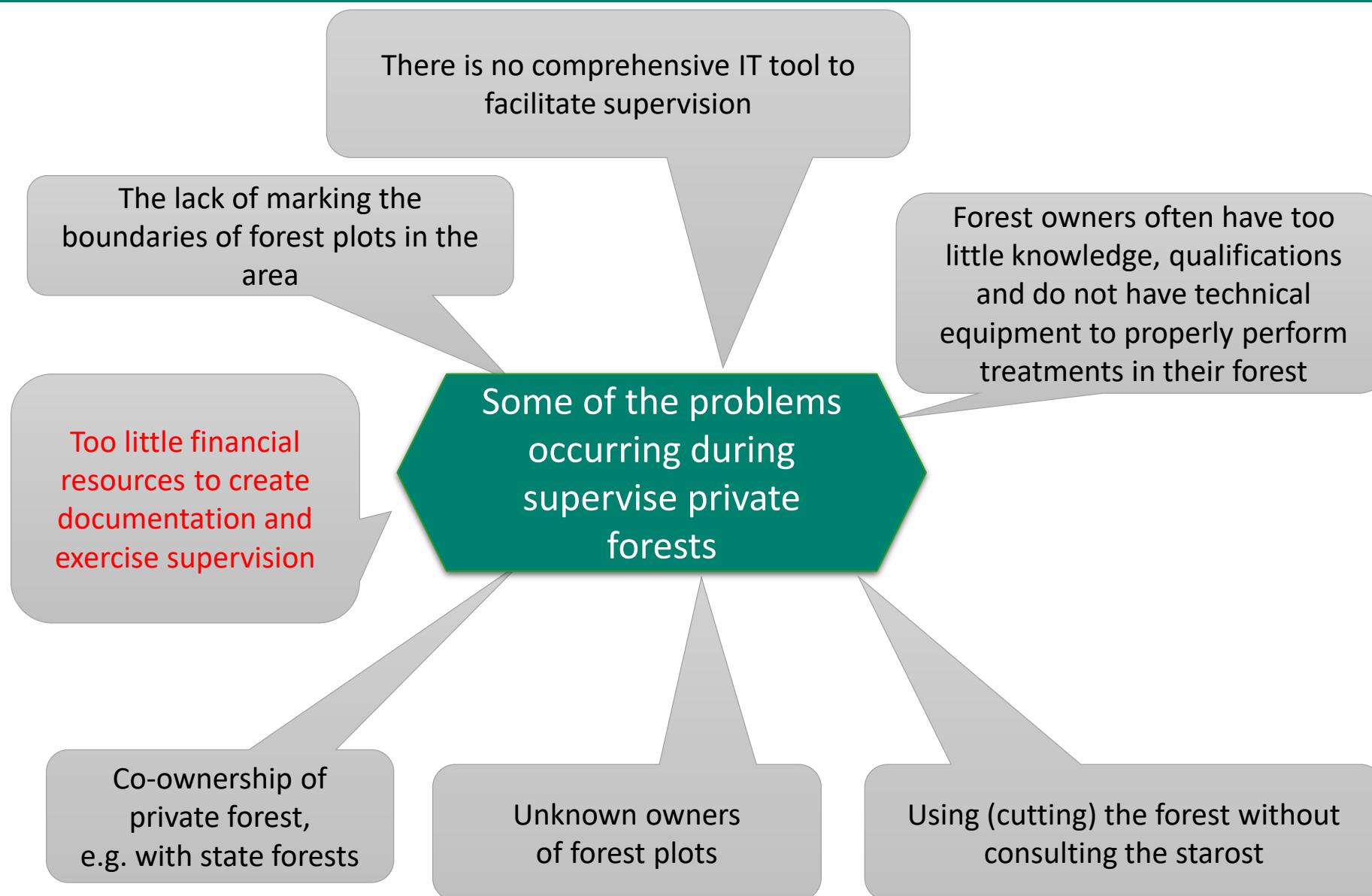


The study was conducted in April 2019 by the Kantar agency on behalf of the Forest Research Institute. The CAPI (Computer Assisted Personal Interview) method was used - the survey was conducted on a random, representative nationwide sample of forest landowners who are farmers (1,003 interviews).



Three studies among owners of private forests (farmers) to evaluate the quality of forestry supervision in private forests using a school grading scale (1-5).







Thanks to the funds transferred from the Forest Fund totalling almost PLN 12 milion (EUR 2,8 mln), simplified plans have been drawn up for 589,000 people in the last six years (2017-2022) ha of forest.



Ministerstwo Rolnictwa
i Rozwoju Wsi

Until December 31, 2022, under the action:

Afforestation of agricultural land

(RDP 2004-2006)

39.3 thousand ha

PLN 384.5 million,

Afforestation of agricultural land and afforestation of non-agricultural land (RDP 2007-2013)

36.6 thousand ha

PLN 1,014.3 million

Afforestation and creation of wooded areas

(RDP 2014-2020)

4.7 thousand ha

PLN 784.2 milion.

TOTAL EUR 507,5 mln

**Thank you
for attention**

Question?